

Belfast • Dublin



Wee Care

Day Nurseries

www.weecare.co.uk

Providing Quality Care and a Flexible Service

Wee Care invites you

to our Day Nurseries, Nursery Schools,
Montessori Schools and After School Clubs

Established 1987

Wee Care would like to thank all our models and in recognition of their input we have made donations to the Irish Cancer Society and the Ulster Cancer Foundation Childrens' Programmes.



Wee Care are registered private day nurseries, nursery schools and after school clubs. In some branches we also provide a drop-in service.

Wee Care nurseries are fully approved by the health boards and conveniently located just off the main arterial routes into Belfast and Dublin.

We provide full and part time day care for children from 6 weeks up to school age.

We also provide part day care including collection from school for school children and nursery school children.

Wee Care are renowned for flexibility. We aim to provide a service which suits the needs of parents and children.

The child to staff ratios are as recommended by health board guidelines.

Wee Care is open from:

Belfast

7.30am - 6.00pm

Monday - Friday

Windsor Avenue North Nursery

in Belfast is open to 6.30pm

Dublin

7.30am - 6.30pm

Monday - Friday

Our Service







Our Ethos

At Wee Care we believe in:

- happy, healthy, and well adjusted children
- promoting positive language and behaviour
- promoting healthy eating
- creating a home-like environment
- creating a happy, fun-loving and relaxed atmosphere
- supplying dedicated, professional and highly qualified staff
- flexibility, with an open door policy
- a warm, loving, safe and caring environment





Our Expertise

It is our aim to remove the worry that all parents feel at leaving their children during the day by providing a service which no one person could provide while never undermining the most important parent/child relationship. To this end your child will be looked after by professionally qualified staff who will provide a

comprehensive educational and caring environment for your child.

It is our intention that your child should be safe, feel secure, learn and have fun in your absence. Individuality and self confidence are encouraged at all times.



7.30am

Education and Play





Wee Care prides itself on offering a well rounded, stimulating and developmentally challenging environment for pre-school age children. We provide the Montessori method of teaching in Dublin and nursery programmes in Belfast that encourage the child to develop their knowledge and skills in Mathematics, Language, Reading, Writing, Botany, Geography and Worldwide Cultures but overall the **love of learning** which they will carry with them for the rest of their lives.

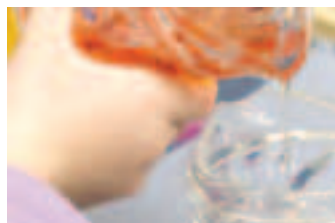
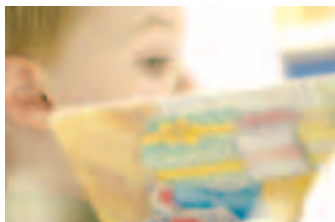
Our Nursery staff and Montessori teachers are dedicated to developing and nurturing the preschool child's insatiable thirst for knowledge in a warm, loving and caring way.



11.00 am

At Wee Care, Babies, Fledglings and Toddlers follow activity programmes suited to their age and stage of development.

Baby rooms have equipment to assist in the development of leg muscles, art and craft materials to aid exploration, 'feely bags', smell boxes and musical instruments to develop the senses and to develop cognitive ability sorting boxes and jigsaws.



Fledgling and Toddler rooms have access to sand and water to aid emotional development, home corner to aid social development, a quiet area for stories and books to aid language development, jigsaws and construction toys to aid cognitive development. Additionally they are involved in singing, dancing and outside play.

The children's day at Wee Care is fun, activity filled and developmentally challenging.



Lunch Time





Wee Care promotes healthy eating and a nutritious, well-balanced, hot lunch is provided daily during which table manners and correct use of cutlery are encouraged. During the day, warmed bottles, snacks and cool drinks keep the children comfortable.



Our menus have been carefully designed to achieve a healthy, balanced diet. A copy of the menu is posted on the notice board.

Each day parents receive a short report giving information such as how the child has eaten, slept and in what activities he or she has been involved.



12.00 noon

Wee Care babies sleep, feed and play according to the rhythm of their individual needs. Our infant and baby rooms provide a free, challenging and stimulating environment which encourages interaction with staff and each other.

The 'big sleep' takes place after lunch with a ritual of closed curtains, low lighting and the constant comforting presence of a member of staff. Older children who do not wish to sleep have 'quiet time' with books or a story.

1.00 pm



The Big Sleep



Learning and Play

In the afternoons the activities on offer are many and varied. Some children may be involved in drama, song and dance, cookery or stretch and grow. Others are burning energy and improving their physical co-ordination in the safe play area. A further group may be having a quiet time with a story.

Wee Care is provided with the most modern equipment. Games and toys are safe, good fun and educational.

Boredom never features in our day.



3.00 pm









After School Club



After School Club 4 years old and older

This service is available from school finishing time to nursery closing time.

We offer to collect your child from school if required. This service is safe, punctual and totally reliable.

The school age child is always welcomed at Wee Care and depending on arrival time is given lunch or a snack and a drink.

Separate rooms are allocated solely for school age children and a supervisor is in attendance

to oversee homework and to help with any problems. In addition to the regular activities, there may be classes in Speech and Drama, cookery, sports instruction and the use of the nursery's books and games.

Children are constantly under supervision and are able to make friends and play in a safe fun environment.

Summer Holiday Schemes run throughout the summer holidays providing a variety of themed trips and exciting indoor and outdoor activities.



5.30pm



Home Time

After a happy, fun and relaxed day at Wee Care the children go home looking forward to the next day when they can return to meet their teachers, carers and friends.



Parental Involvement

Wee Care acknowledges and confirms the crucial role of parents as primary educators and carers of their children. We work in partnership with parents by providing an open, inclusive and welcoming day nursery. We provide daily reports, parent evenings and above all ensure that parents have an up to date record of their child's development.



6.00pm

Head Office
6 Chichester Park South
Antrim Road
Belfast BT15 5DW
Telephone 028 9058 2003
chichester@weecare.co.uk
www.weecare.co.uk

Windsor House
Monkstown Avenue
Monkstown County Dublin
Telephone 003531 2808144
dublin@weecare.ie
www.weecare.ie

**Centre of Excellence 2004
and 2006 - 2008**

1 Windsor Avenue North
Malone Road
Belfast BT9 6EL
Telephone 028 9058 2001
windsor@weecare.co.uk
www.weecare.co.uk

2½ years +
8 King's Road
Knock
Belfast BT5 6JJ
Telephone 028 9058 2002
kingsroad@weecare.co.uk
www.weecare.co.uk

6 weeks - 2½ years
113 North Road
Newtownards Road
Belfast BT5 5NF
Telephone 028 9058 2004
northroad@weecare.co.uk
www.weecare.co.uk

Our King's Road & North Road Nurseries are very close to each other.
They work in close partnership to ensure a smooth & pleasant transition for both
the children & the parents alike.

